

Planning for EAST's Future

Tina Baich, Director

Eastern Academic Scholars' Trust (EAST)

Pan Forum * June 27, 2025



How we get from here to 2031

Increasing feasibility of commitment renewal

- Ephemera Review
- Refining Retentions Working Group

Making membership valuable now and beyond

- Serials & Journals Collection Analysis Project
- Strategic Planning



The image shows the exterior of a modern library building with a large glass facade and a stone base. The text "Increasing Feasibility of Commitment Renewal" is overlaid in a large, bold, blue font. The building's name, "James Branch Cabell Library", and the VCU logo are visible on the stone part of the facade. The sky is blue with white clouds, and there are trees and a street lamp in the foreground.

Increasing Feasibility of Commitment Renewal

 **VCU**
VIRGINIA COMMONWEALTH UNIVERSITY
**James Branch
Cabell Library**

Ephemera Review: Why?

Organic growth over life of EAST

Confusing and not user friendly

Lack of consistency

Reduces out of scope retentions



Ephemera Review: How?

Started in Operations Committee

Moved to smaller volunteer group to:

- Review and categorize publishers
- Review for consistency
- Create tiers



**THANK
YOU**

Alison Armstrong, Radford University
Ed Lener, Virginia Tech
Steve Smith, UMass Boston



Ephemera Review: Results

Publisher Tiers

Tier 1: Ephemera	Removed prior to collection analysis or available for retention removal post-analysis.
Tier 2: Suspect	Included in collection analysis, but flagged as potentially out of scope. Member libraries should review closely for possible retentions.
Tier 3: In Scope	Included in collection analysis.

+ Updated “tips” doc



Refining Retentions Working Group

Goals

- Equitable reduce retentions on over-retained titles
- Provide maximum benefit to members while having a minimal impact on the overall shared print ecosystem

Factors to Consider

- % of collection retained by individual members
- Geographic distribution of commitments across members
- FEMA Risk Area designations of member libraries
- Whether a reasonable drawdown plan has an adequate impact



Refining Retentions Working Group

Membership

- Alison Armstrong, Radford University, ops comm rep
- Anne Koenig, University of Pittsburgh, collection analysis wg rep
- Beth Blanton, collection analysis wg rep
- Elizabeth Taft, Boston University, cohort 1 rep
- Jared Cowing, Williams College, cohort 1 rep
- Missy Laytham, Loyola Notre Dame, ops comm rep
- Rebecca Harrington, University of North Florida, FL rep
- Tony Fonseca, Elms College, board rep

**THANK
YOU**




Refining Retentions Working Group

So far...

- Worth it? Yes!
- Start with more than 5 copies & early cohort libraries
- Allocation Model
 - Balance north and south regions of EAST
 - Very high or high percentage of collection retained
 - Moderate to Very High FEMA Zone weighted 20%



The background image shows the exterior of the L. Douglas Wilder Library. The building is constructed from light-colored stone blocks. A prominent feature is a large, multi-faceted glass pyramid structure on the roof, which appears to be a skylight or a decorative architectural element. Below the pyramid, the entrance is framed by white columns. Above the entrance, the name "L. DOUGLAS WILDER LIBRARY" is inscribed. To the left of the entrance, the word "LEARNING" is visible, and to the right, "RESOURCE CENTER" is partially visible. The foreground includes a paved walkway, some greenery, and a yellow speed limit sign with the number "5".

Making Membership Valuable Now and Beyond

Serials & Journals Project

- No cost, opt-in serials & journals collection analysis
- Analysis provided by Center for Research Libraries
- 18 confirmations but libraries have until end of June to decide



Strategic Planning for 2026-2031

Virtual Board Retreat

March 28: What has EAST achieved?

April 11: What is our vision for EAST?
How can EAST increase its value to members?

May 23: How do we focus our efforts to achieve our vision?

June 16: What have we missed?

Member Engagement

March: Member pulse survey

April: Member update webinars with mini-focus groups

May/June: Member survey

July/August: Member feedback on final draft



EAST Vision

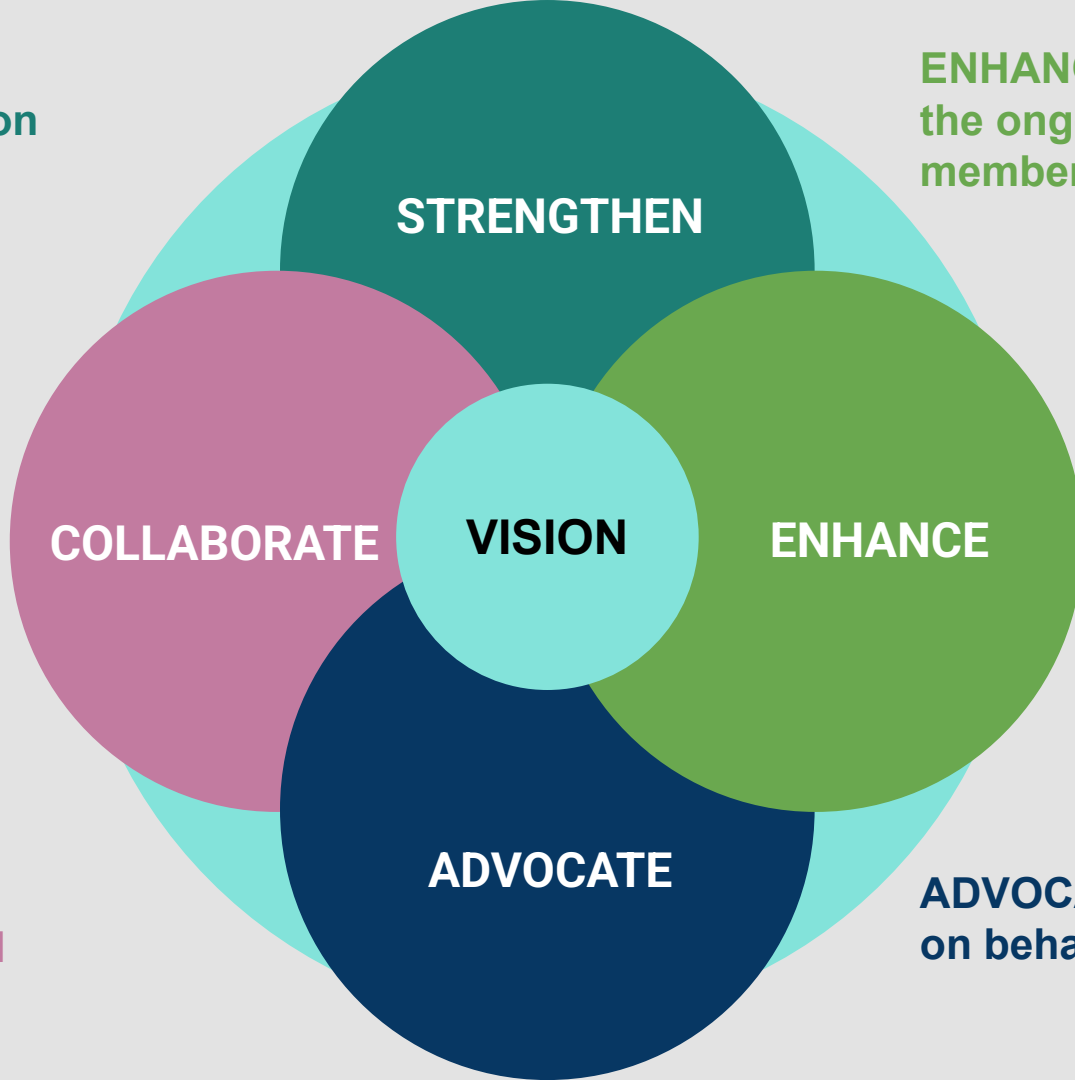
EAST will empower members through trusted leadership and advocacy to collaboratively steward enduring print collections to serve their campus and the wider scholarly community for decades to come. EAST will be a vital element and champion of the global shared print landscape and a model for financially sustainable, flexible, and distributed collective action by libraries.

Adopted May 23, 2025



STRENGTHEN
member collection
building &
management
strategies

ENHANCE
the ongoing value of
membership



COLLABORATE
to improve
preservation and
access

ADVOCATE
on behalf of members



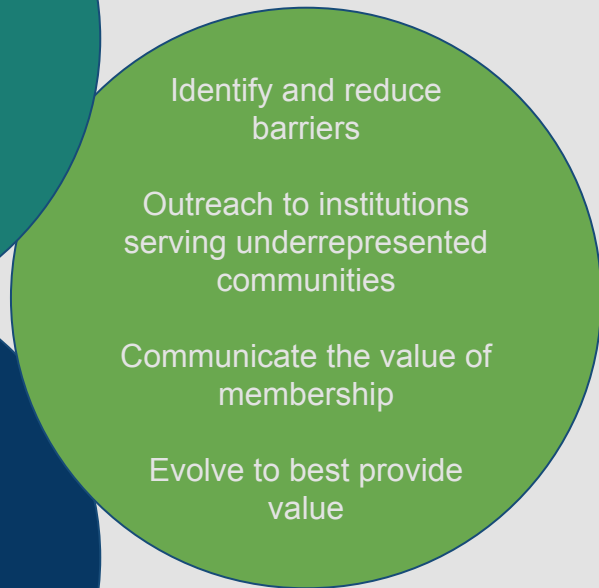
STRENGTHEN
member collection
building &
management
strategies



COLLABORATE
to improve
preservation and
access



ENHANCE
the ongoing value of
membership



ADVOCATE
on behalf of members



Questions?

tbaich@eastlibraries.org



EAST

EASTERN ACADEMIC
SCHOLARS' TRUST

All photos taken by Tina Baich (mostly) in Richmond, VA, and licensed CC-BY.

