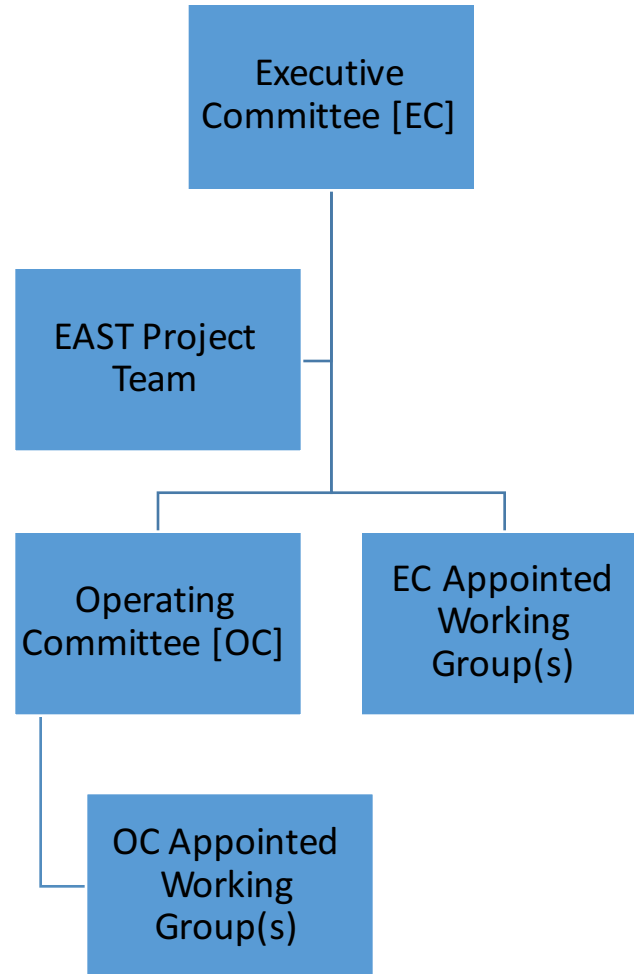


Governance and leadership of EAST

EAST Organizational Chart



The EAST Executive Committee

a brief overview

EAST Executive Committee Membership

- Public institution rep.
- Large collections rep.
- Medium collections rep.
- Small collections rep.
- Consortia members rep.
- Supporting partners rep.

EAST Executive Committee Membership

- Public institution rep.
- Large collections rep.
- Medium collections rep.
- Small collections rep.
- Consortia members rep.
- Supporting partners rep.
- *Co-PI (ex officio): John Unsworth (Brandeis University)*
- *Co-PI (ex officio): Laura Wood (Tufts University)*
- *Project Director (ex officio): Susan Stearns (BLC)*

EAST Executive Committee Membership

- Public institution rep.: Susan Raidy-Klein (UMass-Dartmouth)
- Large collections rep.: Patrick Carr (UConn)
- Medium collections rep.: Chris Loring (Smith College)
- Small collections rep.: Gail Scanlon (Phillips Exeter)
- Consortia members rep.: Clem Guthro (Colby College)
- Supporting partners rep.: Will Wakeling (Northeastern)
- Co-PI (*ex officio*): John Unsworth (Brandeis University)
- Co-PI (*ex officio*): Laura Wood (Tufts University)
- Project Director (*ex officio*): Susan Stearns (BLC)

EAST Executive Committee Membership

- Public institution rep.: Susan Raidy-Klein (UMass-Dartmouth)
- Large collections rep.: Patrick Carr (UConn)
- Medium collections rep.: Chris Loring (Smith College)
- Small collections rep.: Gail Scanlon (Phillips Exeter)
- Consortia members rep.: Clem Guthro (Colby College)
- Supporting partners rep.: Will Wakeling (Northeastern)
- Co-PI (*ex officio*): Tara Lynn Fulton (University of New Hampshire)
- Co-PI (*ex officio*): Laura Wood (Tufts University)
- Project Director (*ex officio*): Susan Stearns (BLC)

EAST Executive Committee Membership

- Public institution rep.: Susan Raidy-Klein (UMass-Dartmouth)
- Large collections rep.: Patrick Carr (UConn)
- Medium collections rep.: Terry Simpkins (Middlebury)
- Small collections rep.: Gail Scanlon (Phillips Exeter)
- Consortia members rep.: Clem Guthro (Colby College)
- Supporting partners rep.: Will Wakeling (Northeastern)
- Co-PI (*ex officio*): Tara Lynn Fulton (University of New Hampshire)
- Co-PI (*ex officio*): Laura Wood (Tufts University)
- Project Director (*ex officio*): Susan Stearns (BLC)

EAST Executive Committee Membership

- Public institution rep.: Susan Raidy-Klein (UMass-Dartmouth): 2015-18
- Large collections rep.: Patrick Carr (UConn): 2015-18
- Medium collections rep.: Terry Simpkins (Middlebury): 2015-17
- Small collections rep.: Gail Scanlon (Phillips Exeter): 2015-17
- Consortia members rep.: Clem Guthro (Colby College): 2015-18
- Supporting partners rep.: Will Wakeling (Northeastern): 2015-17
- Co-PI (*ex officio*): Tara Lynn Fulton (University of New Hampshire)
- Co-PI (*ex officio*): Laura Wood (Tufts University)
- Project Director (*ex officio*): Susan Stearns (BLC)