

# EAST Member Update

EAST Member Meeting  
October 13, 2017

Susan Stearns, Project Director

## University and College Libraries Destroy Books to Make Room for More Beds

Boston – October 13, 2017 - Some sixty academic and research libraries across the eastern US have reportedly completed destruction of more than 10 million scholarly books. The works, although deemed to have significance to scholars, were withdrawn from the member libraries and often destroyed in order to make room for “other services”. The destruction is the by-product of the formation of the Eastern Academic Scholars’ Trust (EAST), a collaboration among the libraries to identify scholarly works that qualify for “de-selection”.



<http://www.theonion.com/article/library-congress-completes-destruction-70-million--54071>

“Following an exhaustive analysis of the collections of our member libraries, we determined that more than half of the books in the libraries’ collections are of little consequence and value to the individual members” said Susan Stearns, Project Director for EAST.

“When another library agrees to keep a copy, particularly when we consider the title irrelevant to our teaching and research, it’s off to the incinerator” added Marian Director, University Librarian from Librorum University and a member of the EAST Executive Committee. “Our university is doubling its enrollment next year in order to make up for a 75% cut in our state funding, so we anticipate at least half of the library will be turned into dorm space”, she continued. Like Carla Hayden of the Library of Congress, whose destructive tendencies we reported on a few weeks ago, Ms. Director is new to her university. “Carla and I are both bringing bold new perspectives to our institutions. This is just the beginning”, she concluded.

# Our agenda

- 9:45 – 10:00 am – Welcome
- 10:00 – 10:45am – Update
- 10:45am – 12:00pm – Leveraging your investment in EAST
- 12:00 – 1:00pm – Lunch
- 1:00 – 2:00pm – Breakout sessions
- 2:00 – 3:30pm – Next steps for EAST

# Before I start



Mei Mendez  
Project Manager

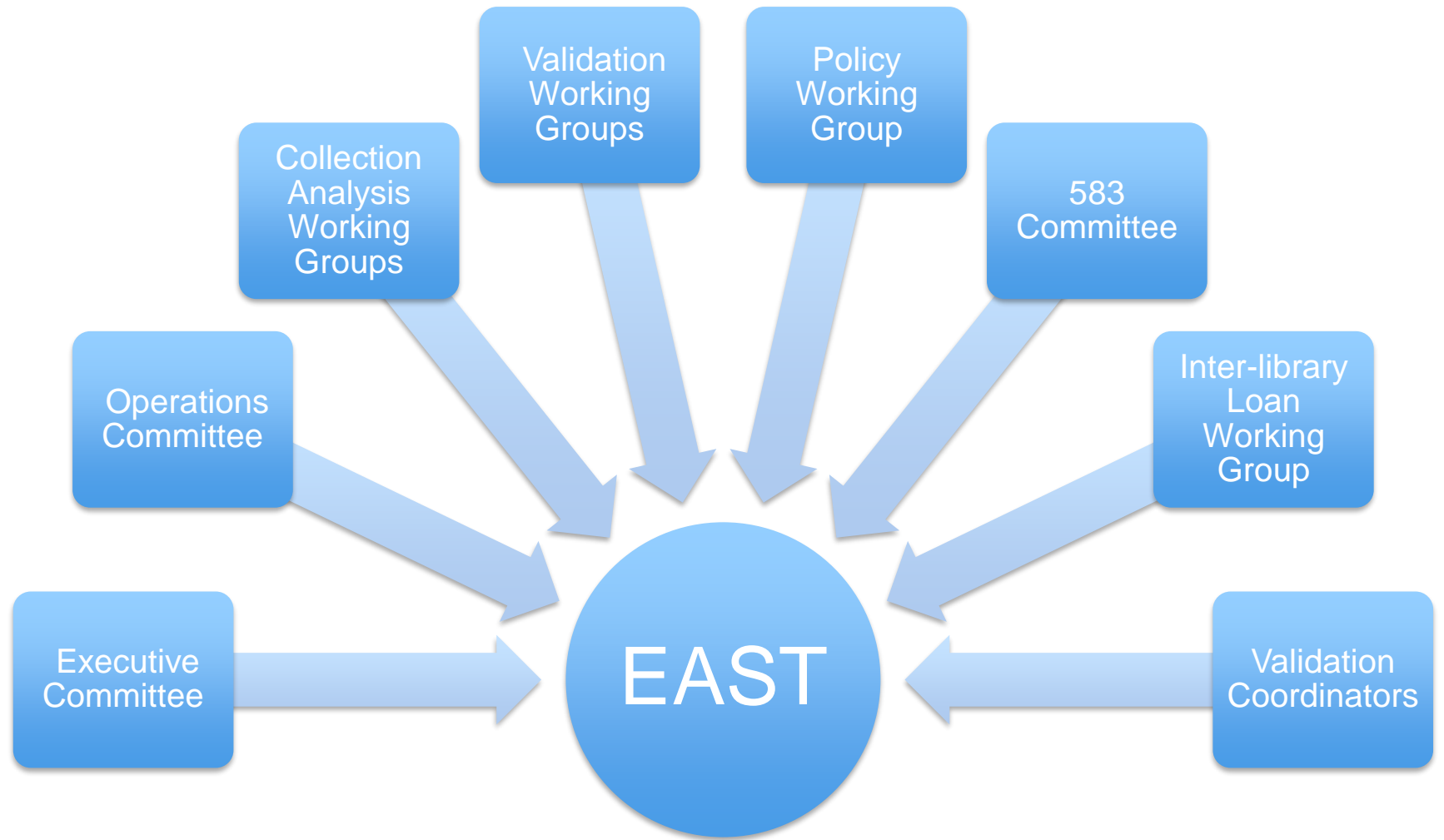


Matthew Revitt  
Shared Print Consultant



Sara Amato  
Data Librarian

## EAST VIP's



We couldn't do it without you...



**EAST**

EASTERN ACADEMIC  
SCHOLARS' TRUST

# And, thanks to our Funders

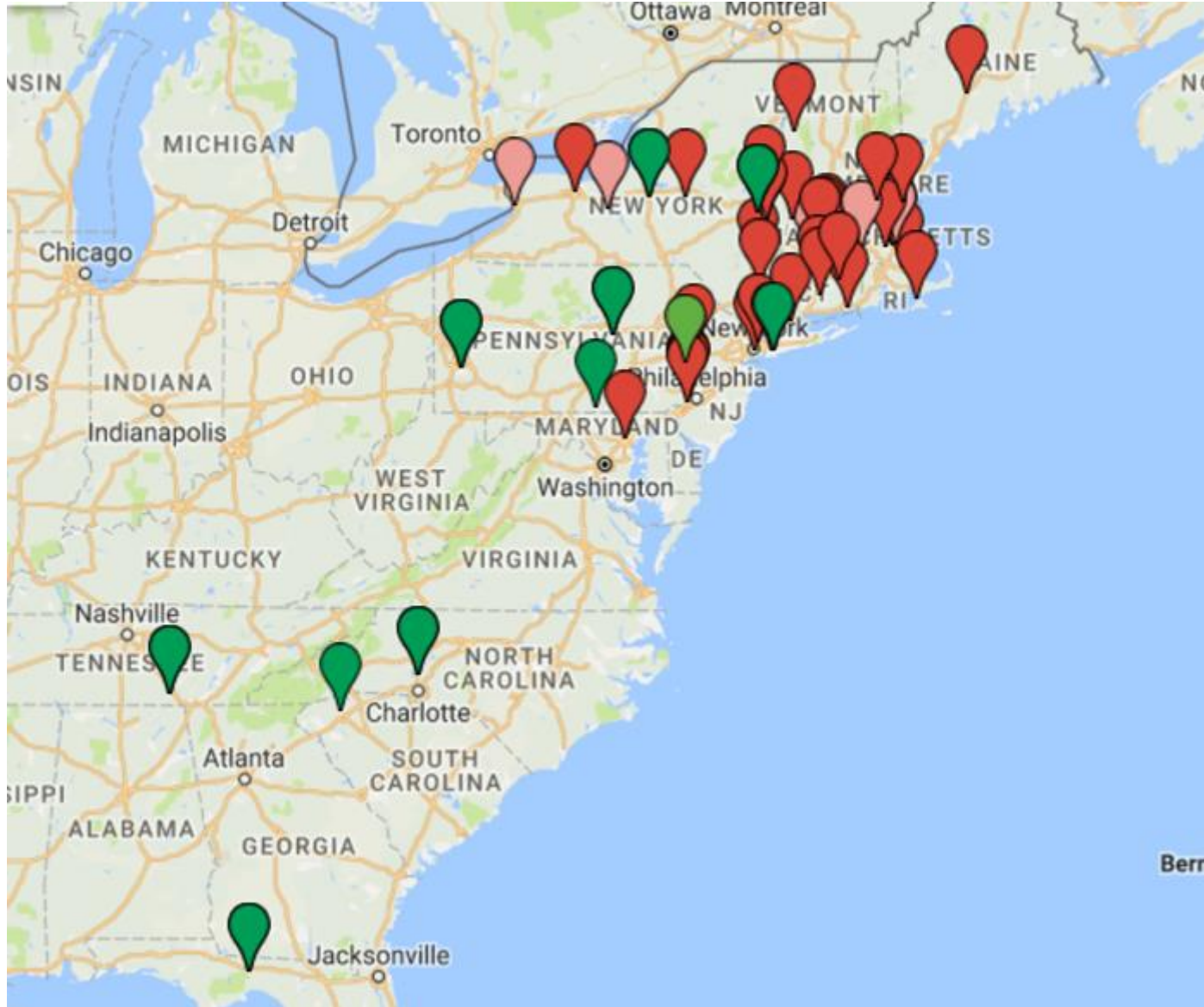


- Extension of Mellon funding through June, 2018 to support Cohort 2 work, validation sample study and collaborative work

## Davis Educational Foundation

- Funding for Cohort 2 collection analysis





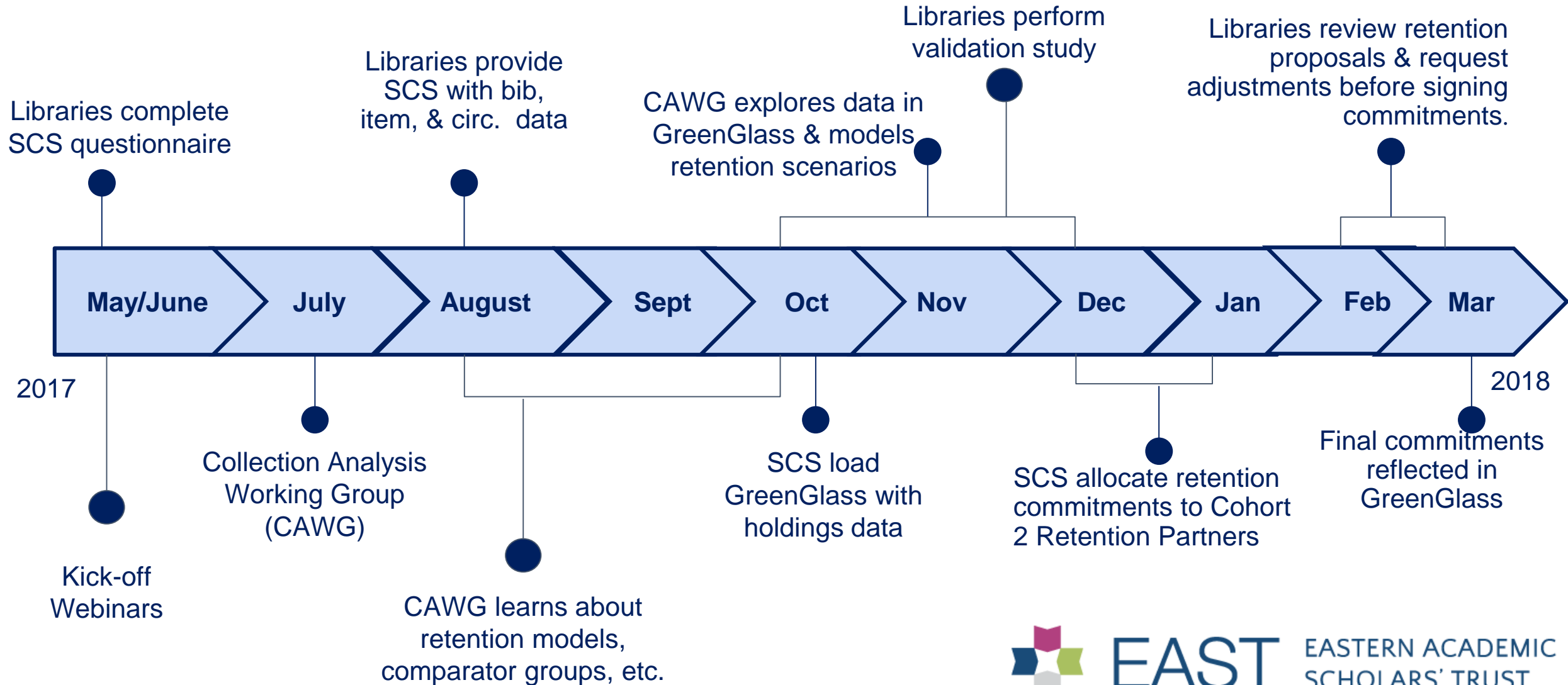
The Eastern  
Academic  
Scholars' Trust –  
60 institutions in 11  
states from Maine  
to Florida  
Cohort 2 libraries  
shown in green

# The Cohort 2 libraries

- Bucknell University
- Davidson College
- DeSales University
- Florida State University
- Furman University
- Gettysburg College
- Hofstra University
- New York University
- University of Pittsburgh
- Syracuse University
- Union College – in Cohort 1 through ConnectNY
- University of the South
- University of Massachusetts Medical School – Serials/Journals only
- Villanova – Supporting Partner



# Cohort 2 Timeline



**EAST**

EASTERN ACADEMIC  
SCHOLARS' TRUST

# When more IS better...



- Additional retention commitments
- Further withdrawals = more space
- Expanded lending network
- Additional financial support

## EAST Retentions

SEARCH:

Number of EAST Retention Copies:

HathiTrust:

## The EAST retention commitments database

<https://east-retention-db.appspot.com/>

### Retained by (optional):

- |   |  |  |  |
|---|--|--|--|
| <input type="checkbox"/> Any (default)                | <input type="checkbox"/> Connecticut College             | <input type="checkbox"/> Phillips Exeter Academy   | <input type="checkbox"/> UMass Boston                |
| <input type="checkbox"/> Adelphi                      | <input type="checkbox"/> Elms College                    | <input type="checkbox"/> Saint Anselm College      | <input type="checkbox"/> UMass Dartmouth             |
| <input type="checkbox"/> Amherst College              | <input type="checkbox"/> Fairfield University            | <input type="checkbox"/> Siena College             | <input type="checkbox"/> UMass Lowell                |
| <input type="checkbox"/> Bard                         | <input type="checkbox"/> Five College Repository (FCLRC) | <input type="checkbox"/> Skidmore College          | <input type="checkbox"/> University of New Hampshire |
| <input type="checkbox"/> Boston College               | <input type="checkbox"/> Hamilton College                | <input type="checkbox"/> Smith College             | <input type="checkbox"/> University of Rochester     |
| <input type="checkbox"/> Boston University            | <input type="checkbox"/> Hampshire College               | <input type="checkbox"/> Swarthmore College        | <input type="checkbox"/> Vassar College              |
| <input type="checkbox"/> Brandeis University          | <input type="checkbox"/> Lafayette College               | <input type="checkbox"/> Trinity College           | <input type="checkbox"/> Wellesley College           |
| <input type="checkbox"/> Bridgewater State University | <input type="checkbox"/> Loyola Notre Dame               | <input type="checkbox"/> Union College             | <input type="checkbox"/> Wesleyan University         |
| <input type="checkbox"/> Bryn Mawr College            | <input type="checkbox"/> Middlebury College              | <input type="checkbox"/> University of Connecticut | <input type="checkbox"/> Williams College            |
| <input type="checkbox"/> Colby College                | <input type="checkbox"/> Mount Holyoke College           | <input type="checkbox"/> UMass Amherst             | <input type="checkbox"/> Yeshiva University          |

# Registering EAST Retention Commitments in WorldCat®



Shared Print Registration Service

# EAST Lending Network



- Best Practices
- Rapid Pod
- Register in OCLC Policy Directory

EAST libraries strongly support a policy of free lending across the member libraries

# Serial & Journal Retention Partners - 29 Total

- Amherst College
- Boston College
- Boston University
- Brandeis University
- Connecticut College
- Elms College
- Fairfield University
- Five Colleges, Incorporated
- Hamilton College
- Lafayette College
- Loyola Notre Dame
- MBLWHOI
- Mount Holyoke College
- Siena College
- Smith College

- Swarthmore College
- Trinity College
- Union College
- University of Massachusetts - Amherst
- Williams College

## **Cohort 2:**

- De Sales University
- Syracuse University
- Hofstra University
- Bucknell University
- NYU
- Tufts University
- University of Pittsburgh
- University of Massachusetts Medical School

## Totals by Library

*EAST Holdings (total holdings for these titles in EAST)*

*Library Title Sets (how many titles in my library)*

	Library Title Sets	EAST Holdings
Amherst	6,551	21,188
Bard	902	8,581
Boston College	28,307	84,231
Boston University	27,463	78,495
Brandeis	13,980	50,834
Connecticut College	9,501	37,214
Elms	141	1,038
Fairfield	1,285	9,569
Five Colleges	17,349	50,229
Hamilton	5,592	30,191
Lafayette	5,729	32,248
Loyola	2,139	14,633
Mount Holyoke	6,379	31,386
Siena	1,729	13,247
Smith	7,087	27,660
Swarthmore	2,733	19,623
Trinity	4,684	28,228
UMass Amherst	33,596	80,846
Union	4,227	26,460
Williams	10,258	45,810
Woods Hole	6,482	17,325

EAST Holdings



Jstor

- ☐ (All)
- ☒ Not in JSTOR
- ☐ In JSTOR

Cohort 1 serials/journals  
titles as presented in  
Tableau for analysis:  
108,863 title sets  
representing 195,793  
holdings



# Totals by Library

*EAST Holdings (total holdings for these titles in EAST)*

*Library Title Sets (how many titles in my library)*

	Library Title Sets	EAST Holdings
Amherst	1,187	5,693
Bard	118	589
Boston College	4,535	21,559
Boston University	4,423	20,972
Brandeis	2,755	13,216
Connecticut College	1,592	7,724
Elms	44	216
Fairfield	372	1,795
Five Colleges	2,503	11,888
Hamilton	1,253	6,171
Lafayette	1,564	7,705
Loyola	598	2,883
Mount Holyoke	1,406	6,879
Siena	374	1,847
Smith	1,247	6,044
Swarthmore	832	4,145
Trinity	1,217	6,012
UMass Amherst	3,993	18,886
Union	1,219	5,998
Williams	2,406	11,606
Woods Hole	767	3,681

EAST Holdings

4

6

Jstor

- ☐ (All)
- ☒ Not in JSTOR
- ☐ In JSTOR

Totals, by library, of those titles held by 4-6 of the retention partners: 7,348 titles representing 34,405 holdings



EAST

EASTERN ACADEMIC  
SCHOLARS' TRUST

# Validation and more validation



- Deeper dive into the Cohort 1 validation sample set
- ~70,000 titles ‘at risk’ of being missing or in poor condition with surplus copies in EAST
- Validation sampling used to enrich retention commitments

# Validation Sample Study Redux – Cohort 2

- Replicate the sample study with 12 Cohort 2 libraries – including 2 with collection sizes of more than 3 million: mid-October to mid-December
- Reusing documentation and training from Cohort 1
- Determine if results should impact retention model or allocation
  - Should we retain additional copies of older materials?
  - Should we avoid allocation to libraries with low availability?



EAST

EASTERN ACADEMIC  
SCHOLARS' TRUST

# Operations Committee



- Focus on operationalizing the work of EAST
- The “devil is in the details” committee
- Charged by the Executive Committee
- Elected by the membership
- Includes broad representative across types & sizes of libraries

# Reallocation of Retention Commitments

Help! We've:

- lost a book
- found mold
- had water damage

...

<https://eastlibraries.org/frequently-asked-questions-about-retention-commitments>



EAST

EASTERN ACADEMIC  
SCHOLARS' TRUST

# Reallocation Requests - 2018 / 2019

Reallocation requests made prior to December 2017, any titles available in the EAST Cohort 2 libraries will be reassigned there.

For 2018, EAST will follow a semi-annual schedule of retention reallocations.

Process reevaluated in 2019 for sustainability/functionality

At any time during the calendar year		Requests for reallocation may be submitted at any time by providing the <a href="#">EAST Project Team</a> with a list of OCLC numbers.
May 1st	Nov 1st	EAST Project Team reminds member libraries of June/December 1st deadline to submit reallocation requests.
June 1st - 15th	Dec 1st - 15th	EAST staff determines which titles have surplus copies in EAST for potential reallocation.
June 15th - July 31st	Dec 15th - Jan 31st	<a href="#">Operational Contacts</a> at EAST libraries holding surplus copies are provided lists of potential additional retention requests. Libraries have 6 weeks to examine the lists and respond if they are able to take on the additional retentions. Libraries are then responsible for recording retention commitments on these titles in their ILS and WorldCat (when available). The EAST Project Team will update the EAST Retention Database.
August 1st	Feb 1st	Libraries who submitted requests for retention reallocation are informed of the results.





HathiTrust



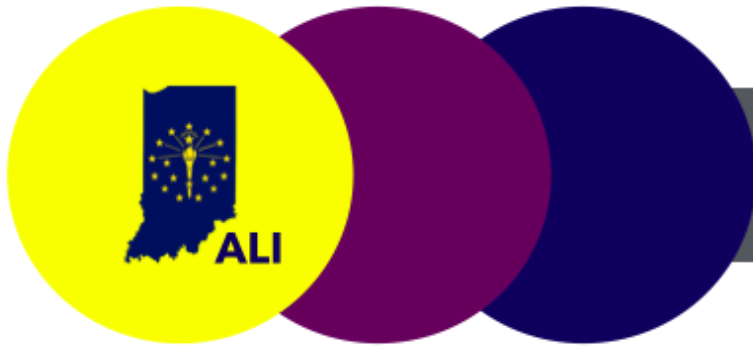
[www.hathitrust.org](http://www.hathitrust.org)



**COPPUL** | Council of Prairie and  
Pacific University Libraries

THE  
ANDREW W.

**MELLON**  
FOUNDATION



ACADEMIC LIBRARIES  
OF INDIANA



EAST



MIDWEST COLLABORATIVE  
*for* LIBRARY SERVICES  
Building better libraries



# Summit April 5-6 in Boston

- What are we trying to accomplish through collaboration?
- What is the corpus of content we have a shared interest in stewarding?
- What is essential to an entity that could enable collaboration in our efforts to steward this corpus?
- What are the most critical priority areas that such an entity should address?
- What are the priorities for next steps?

**METRO**  
**MEETING CENTERS**  
**B O S T O N**

# The future of EAST – Questions to ponder

- Our boundaries
  - Geography
  - Types of content – by format, by subject area, other
  - Library types - public, community colleges
  - Total number of members
  - Ability to adhere to retention requirements

# Additional questions to ponder

- Our goals and structure
  - What does sharing mean as EAST grows?
  - EAST offers members new ways of thinking about collections. What are the implications for goals?
  - What organizational structure best supports the goals of EAST?
  - How do we best incentivize membership?
- Defining success
  - What data should we be collecting to analyze value and success?

# Thank you.

[sstearns@blc.org](mailto:sstearns@blc.org)



Education, Owl  
graphics by Freepik,  
Flaticon, CC BY 3.0 (via  
Logo Maker)



**EAST**

EASTERN ACADEMIC  
SCHOLARS' TRUST